



LAMBRO INDUSTRIES, INC.

Ventilation Accessories Since 1967

UL 2158A CLOTHES DRYER TRANSITION DUCT VENT KITS

Check with local building codes prior to installation.

IMPORTANT SAFETY INSTRUCTIONS:

WARNING: To reduce the risk of fire or injury to persons, follow basic safety precautions, including the following:

- For use with clothes dryers only, do not use for any other purpose.
- Keep the area around the exhaust opening and adjacent surrounding areas free from the accumulation of lint, dust, and dirt.
- The interior of the exhaust duct should be cleaned periodically by qualified service personnel.
- A gas dryer must always be vented outdoors!
- Regularly inspect the exhaust duct to be sure that it has not become crushed or otherwise restricted.

IMPORTANT:

- Do not exhaust clothes dryer into chimney, a wall, a ceiling, or a concealed space of a building.
- Do not use screws to attach any duct sections together, these could project into the duct and trap lint, creating a fire hazard.

Check Dryer Manufacturer Warranty for Compliance.

This product is Listed to UL Standards for Safety by Underwriters Laboratories Inc. (UL)

NOTE: Per UL 2158A, only ducts 8 foot lengths or less can be UL marked and installed.



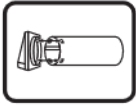
LAMBRO INDUSTRIES, INC.

Ventilation Accessories Since 1967



Press the aluminum pipe together and lock it into place.

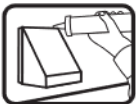
Attach pipe to vent by aligning clips on vent collar to slots on pipe and snap in place.



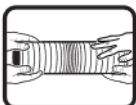
Cut a 4 1/4" hole through the outside wall or use existing hole.



From the outside, slide pipe through the hole opening until the vent is flush against outside wall surface.

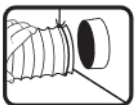
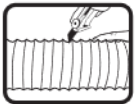


Secure to the outside wall using 4 screws (Not Included). Caulk around vent and outside wall if necessary.



Extend duct to its full length, and position, cut and discard any excess.

Note: Keep duct as straight as possible for maximum air flow and least restrictions, while providing for easy maintenance.



Attach one end of flexible duct to exhaust outlet pipe using supplied clamp and tighten.



Attach the other end of flexible duct to vent pipe using supplied clamp and tighten.