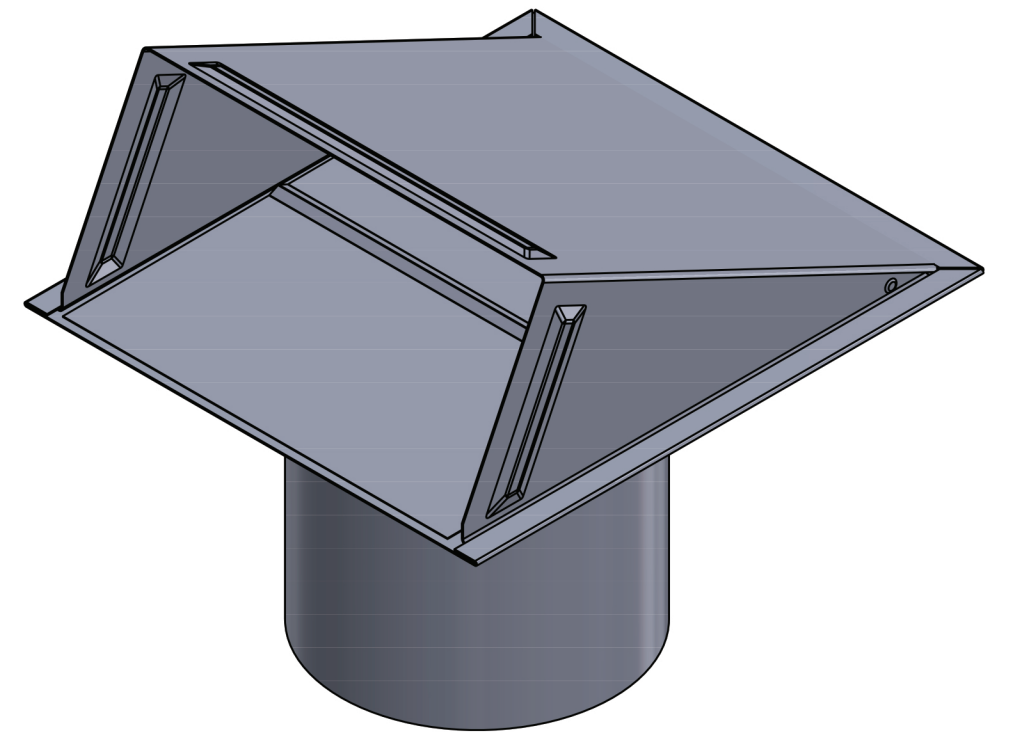


OPEN VENT



CLOSED VENT

PROPRIETARY AND CONFIDENTIAL
THE INFORMATION CONTAINED IN THIS
DRAWING IS THE SOLE PROPERTY OF
LAMBRO. ANY REPRODUCTION IN PART
OR AS A WHOLE WITHOUT THE WRITTEN
PERMISSION OF LAMBRO IS PROHIBITED.

		UNLESS OTHERWISE SPECIFIED:		NAME	DATE
		DIMENSIONS ARE IN INCHES	DRAWN		
		TOLERANCES:	CHECKED		
		FRACTIONAL ± 1/16	ENG APPR.		
		ANGULAR: MACH ± 1 BEND ± .01	MFG APPR.		
		TWO PLACE DECIMAL ±0.01			
		THREE PLACE DECIMAL ±0.005			
		INTERPRET GEOMETRIC TOLERANCING PER:	Q.A.		
		MATERIAL	COMMENTS:		
			Net Free Area (NFA)		
			40 sq. in.		
NEXT ASSY	USED ON	FINISH	Spring controlled damper		
APPLICATION		DO NOT SCALE DRAWING			

 Lambro Industries, Inc.
115 Albany Ave.
Amityville, NY 11701
(631) 842-8088
www.lambro.net

TITLE: 6" Aluminum Wall Exhaust Hood Vent
6" Pipe
Cover & Base: 22 Gauge
Damper & Pipe: 26 Gauge

SIZE	DWG. NO.	REV
C	3460-6	
SCALE: 1:3	WEIGHT:	SHEET 1 OF 1