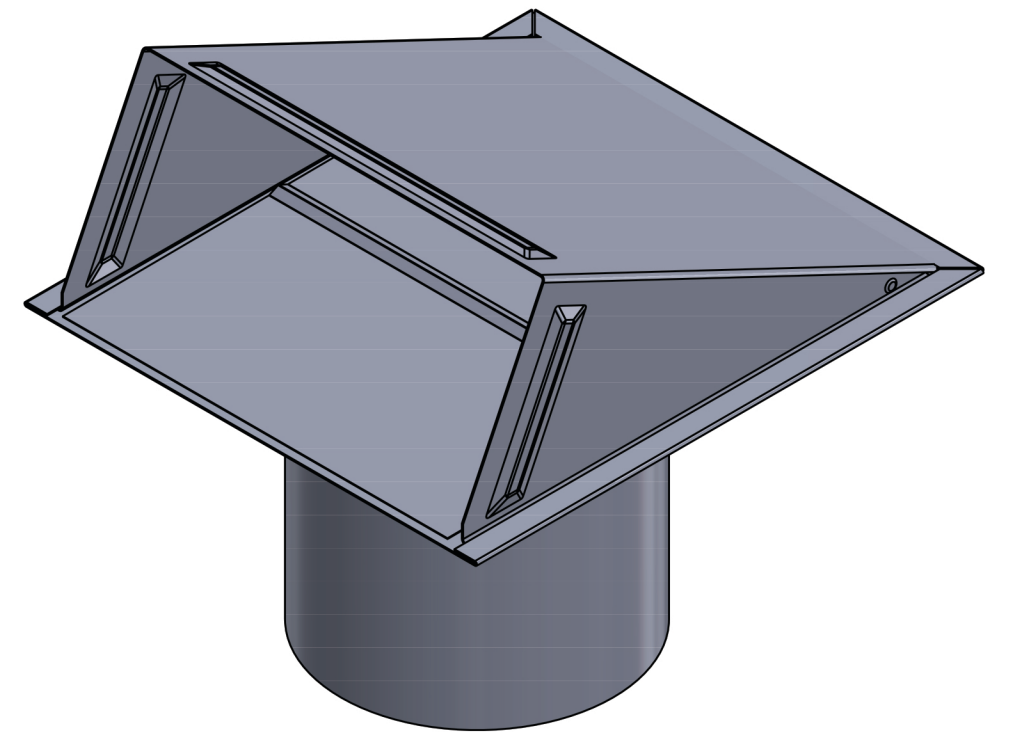


OPEN VENT



CLOSED VENT

PROPRIETARY AND CONFIDENTIAL  
THE INFORMATION CONTAINED IN THIS  
DRAWING IS THE SOLE PROPERTY OF  
LAMBRO. ANY REPRODUCTION IN PART  
OR AS A WHOLE WITHOUT THE WRITTEN  
PERMISSION OF LAMBRO IS PROHIBITED.

		UNLESS OTHERWISE SPECIFIED:		NAME	DATE
		DIMENSIONS ARE IN INCHES	DRAWN		
		TOLERANCES:	CHECKED		
		FRACTIONAL: 1/16	ENG APPR.		
		ANGULAR: MACH ± .1 BEND ± .01	MFG APPR.		
		TWO PLACE DECIMAL ± 0.01			
		THREE PLACE DECIMAL ± 0.005			
		INTERPRET GEOMETRIC TOLERANCING PER:	Q.A.		
		MATERIAL	COMMENTS:		
		FINISH	Net Free Area (NFA)		
NEXT ASSY	USED ON		40 sq. in.		
APPLICATION		DO NOT SCALE DRAWING	Spring controlled damper		



Lambro Industries, Inc.  
115 Albany Ave.  
Amityville, NY 11701  
(631) 842-8088  
www.lambro.net

TITLE: 6" Galvanized Steel Wall Exhaust Hood Vent 6" Pipe Cover, Base, Damper & Pipe: 26 Gauge			SIZE	DWG. NO.	REV
			C	3460G-6	
SCALE: 1:3		WEIGHT:	SHEET 1 OF 1		