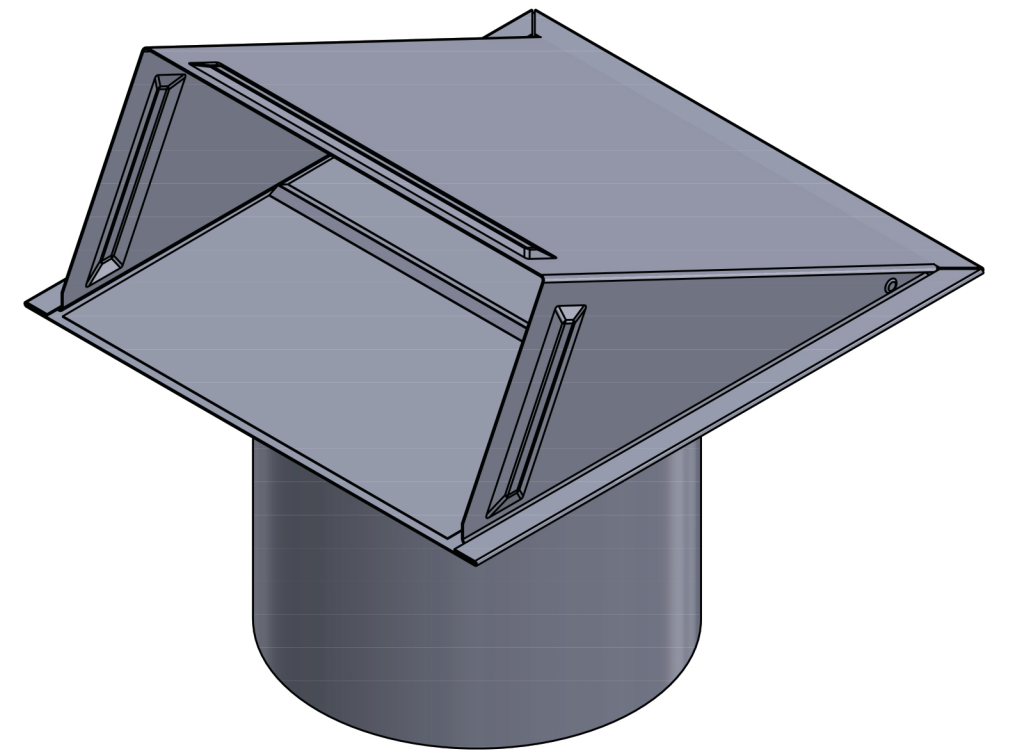


OPEN VENT



CLOSED VENT

**PROPRIETARY AND CONFIDENTIAL**  
THE INFORMATION CONTAINED IN THIS  
DRAWING IS THE SOLE PROPERTY OF  
LAMBRO. ANY REPRODUCTION IN PART  
OR AS A WHOLE WITHOUT THE WRITTEN  
PERMISSION OF LAMBRO IS PROHIBITED.

UNLESS OTHERWISE SPECIFIED:			NAME	DATE
DIMENSIONS ARE IN INCHES TOLERANCES: FRACTIONAL $\pm 1/16$ ANGULAR: MACH $\pm 1^\circ$ BEND $\pm .01$ TWO PLACE DECIMAL $\pm 0.01$ THREE PLACE DECIMAL $\pm 0.005$	NEXT ASSY	USED ON	DRAWN	
			CHECKED	
			ENG APPR.	
			MFG APPR.	
INTERPRET GEOMETRIC TOLERANCING PER:			Q.A.	
MATERIAL			COMMENTS:	
FINISH			Net Free Area (NFA)	
APPLICATION			Mouth Opening: 40 sq. in.	
			Spring Controlled Damper	
			DO NOT SCALE DRAWING	

**LAMBRO** Lambro Industries, Inc.  
115 Albany Ave.  
Amityville, NY 11701  
(631) 842-8088  
www.lambro.net

TITLE: 7" Paint Grade Steel Wall Exhaust Hood Vent  
Spring Damper - 6" Pipe  
Cover, Base, Damper & Pipe: 26 Gauge

SIZE	DWG. NO.	REV
C	3470G-6-PG	
SCALE: 1:3	WEIGHT:	SHEET 1 OF 1