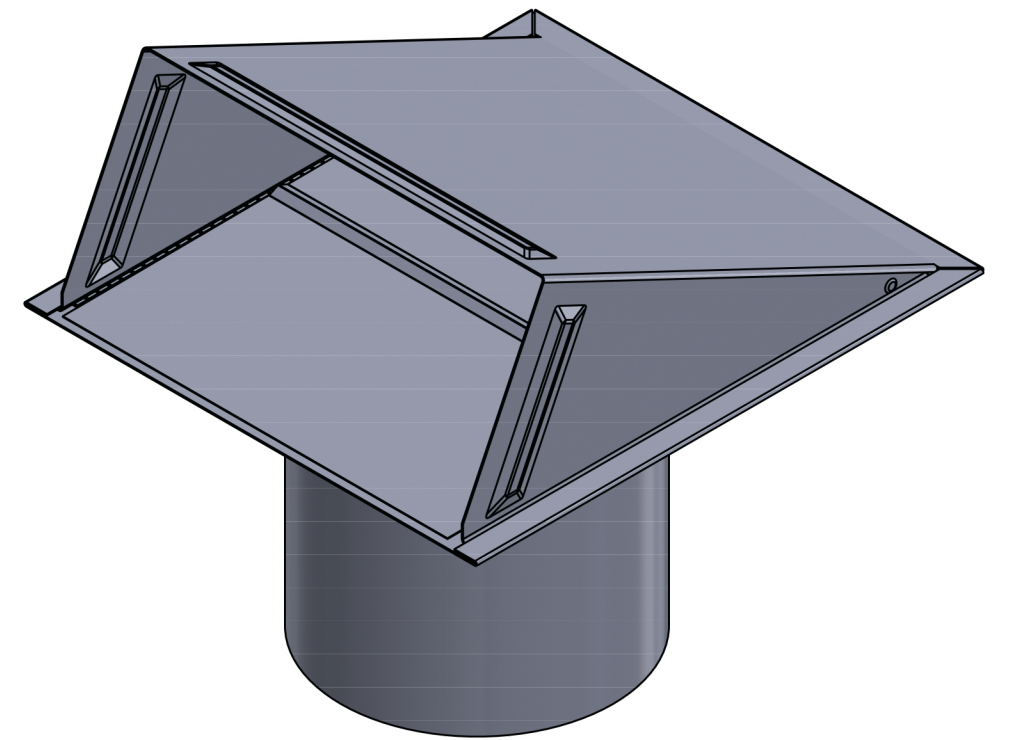


OPEN VENT



CLOSED VENT

PROPRIETARY AND CONFIDENTIAL  
THE INFORMATION CONTAINED IN THIS  
DRAWING IS THE SOLE PROPERTY OF  
LAMBRO. ANY REPRODUCTION IN PART  
OR AS A WHOLE WITHOUT THE WRITTEN  
PERMISSION OF LAMBRO IS PROHIBITED.

UNLESS OTHERWISE SPECIFIED:			NAME	DATE
DIMENSIONS ARE IN INCHES TOLERANCES: FRACTIONAL: 1/16 ANGULAR: MACH ± .1 TWO PLACE DECIMAL ± 0.01 THREE PLACE DECIMAL ± 0.005		DRAWN		
		CHECKED		
		ENG APPR.		
		MFG APPR.		
INTERPRET GEOMETRIC TOLERANCING PER:		Q.A.		
MATERIAL		COMMENTS:		
FINISH		Net Free Area (NFA)		
APPLICATION		Without Screen: 40 sq. in. With Screen: 15 sq. in.		
		Spring controlled damper		

**LAMBRO** Lambro Industries, Inc.  
115 Albany Ave.  
Amityville, NY 11701  
(631) 842-8088  
www.lambro.net

TITLE: 6" Aluminum Wall Exhaust Hood Vent  
Damper - 1/4" Wire Mesh Screen - 6" Pipe  
Cover & Base: 22 Gauge  
Damper & Pipe: 26 Gauge

SIZE	DWG. NO.	REV
C	3460MS-6	
SCALE: 1:3	WEIGHT:	SHEET 1 OF 1