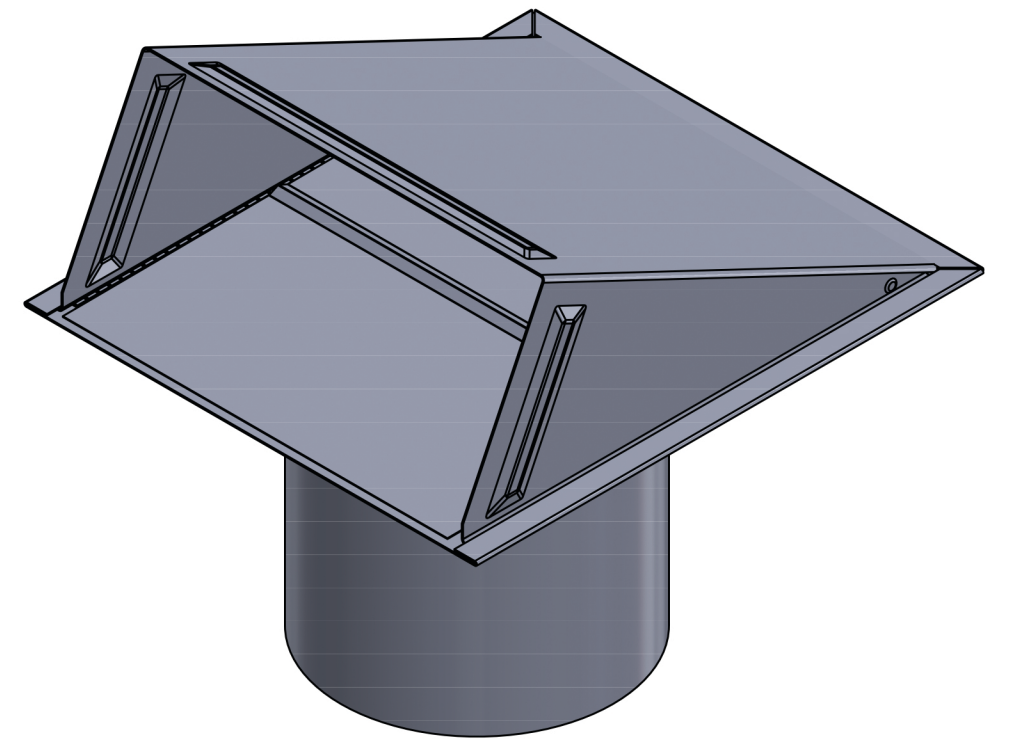


OPEN VENT



CLOSED VENT

PROPRIETARY AND CONFIDENTIAL
THE INFORMATION CONTAINED IN THIS
DRAWING IS THE SOLE PROPERTY OF
LAMBRO. ANY REPRODUCTION IN PART
OR AS A WHOLE WITHOUT THE WRITTEN
PERMISSION OF LAMBRO IS PROHIBITED.

UNLESS OTHERWISE SPECIFIED:			NAME	DATE
DIMENSIONS ARE IN INCHES TOLERANCES: FRACTIONAL: 1/16 ANGULAR: MACH ± .1 TWO PLACE DECIMAL ± 0.01 THREE PLACE DECIMAL ± 0.005		DRAWN		
		CHECKED		
		ENG APPR.		
		MFG APPR.		
INTERPRET GEOMETRIC TOLERANCING PER:		Q.A.		
MATERIAL		COMMENTS:		
FINISH		Net Free Area (NFA)		
		Without Screen: 40 sq. in. With Screen: 15 sq. in.		
NEXT ASSY	USED ON	Spring controlled damper		
APPLICATION		DO NOT SCALE DRAWING		

 **Lambro Industries, Inc.**
115 Albany Ave.
Amityville, NY 11701
(631) 842-8088
www.lambro.net

TITLE: 6" Galvanized Steel Wall Exhaust Hood Vent
Damper - 1/4" Wire Mesh Screen - 6" Pipe
Cover, Base, Damper & Pipe: 26 Gauge

SIZE	DWG. NO.	REV
C	3460GMS-6	
SCALE: 1:3	WEIGHT:	SHEET 1 OF 1