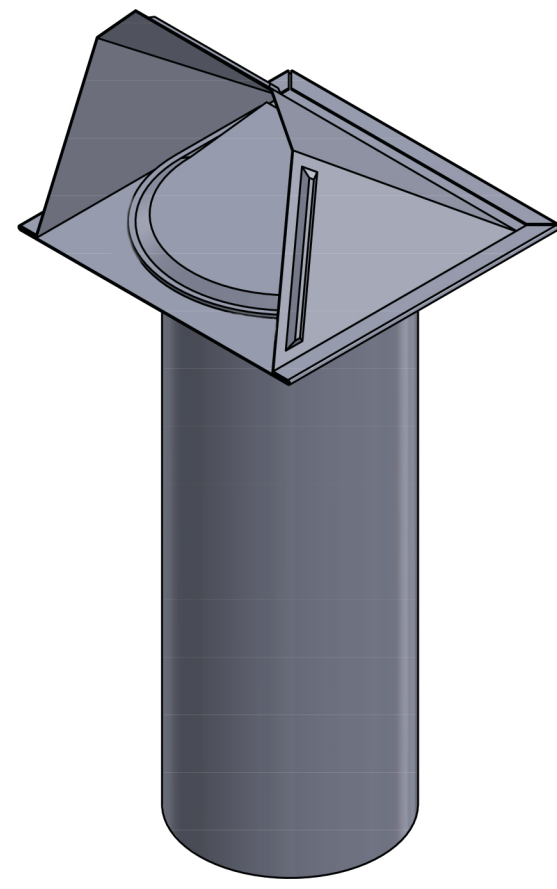
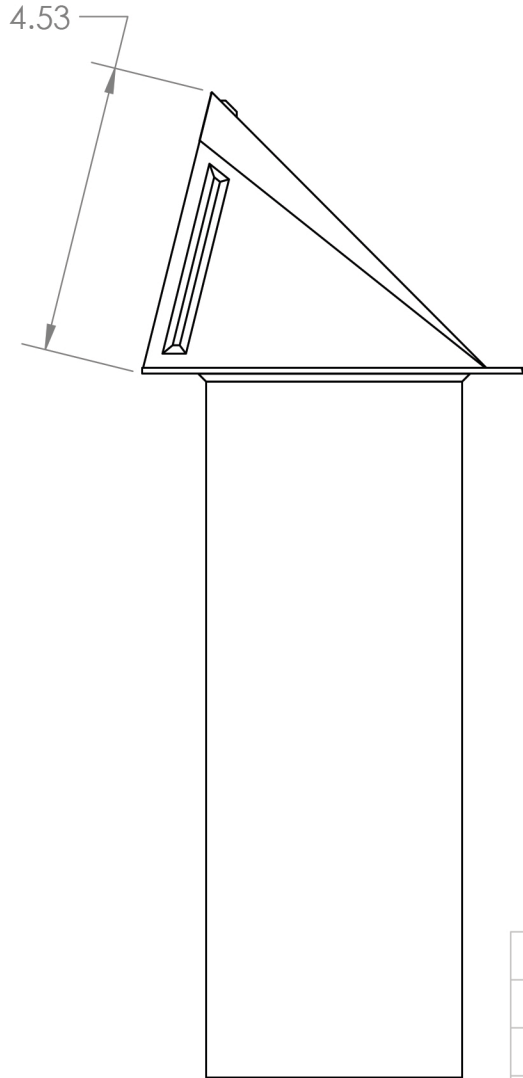
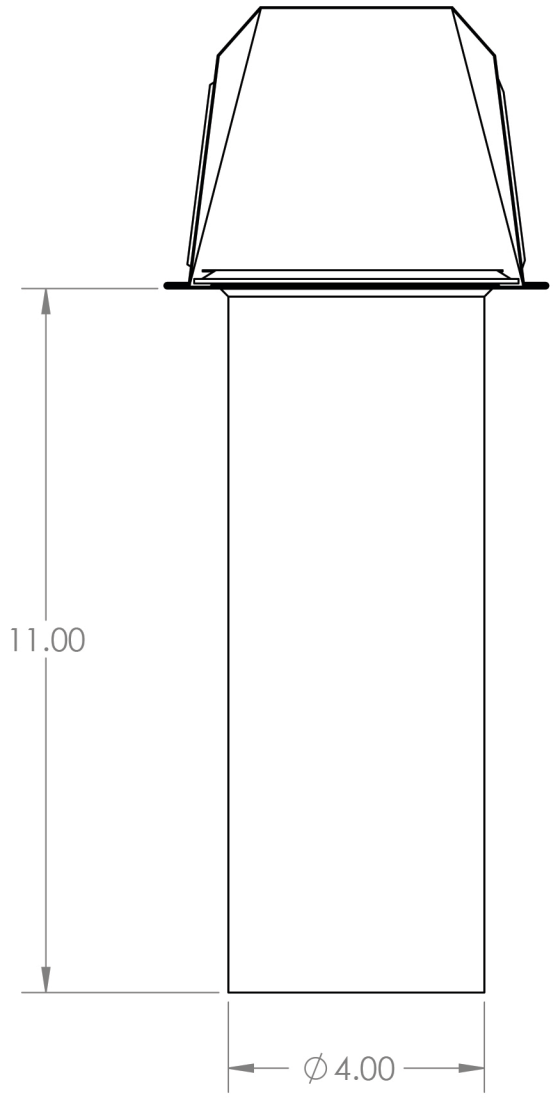
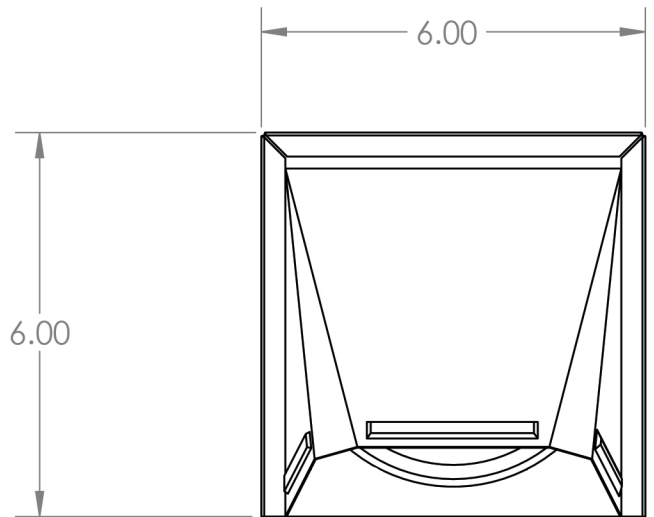


4 3 2 1

B



B

A

4 3 2 1

A

PROPRIETARY AND CONFIDENTIAL
THE INFORMATION CONTAINED IN THIS
DRAWING IS THE SOLE PROPERTY OF
LAMBRO. ANY REPRODUCTION IN PART
OR AS A WHOLE WITHOUT THE WRITTEN
PERMISSION OF LAMBRO IS PROHIBITED.

		UNLESS OTHERWISE SPECIFIED:		NAME	DATE
		DIMENSIONS ARE IN INCHES	DRAWN		
		TOLERANCES:	CHECKED		
		FRACTIONAL ±1/16	ENG APPR.		
		ANGULAR: MACH ±1 BEND ±.01	MFG APPR.		
		TWO PLACE DECIMAL ±0.01	Q.A.		
		THREE PLACE DECIMAL ±0.005	COMMENTS:		
		INTERPRET GEOMETRIC TOLERANCING PER:	Net Free Area (NFA)		
		MATERIAL	Mouth Opening: 20.5 sq. in.		
NEXT ASSY	USED ON	FINISH	Spring Controlled Damper		
APPLICATION		DO NOT SCALE DRAWING			



Lambro Industries, Inc.
115 Albany Ave.
Amityville, NY 11701
(631) 842-8088
www.lambro.net

TITLE: 4" Paint Grade Steel Wall Exhaust Hood Vent
Spring Damper - 11" Pipe
Cover, Base, Damper & Pipe: 26 Gauge

SIZE	DWG. NO.	
B	34400GSPG-PG	
SCALE: 1:3	WEIGHT:	SHEET 1 OF 1