

4

3

2

1

D

D

C

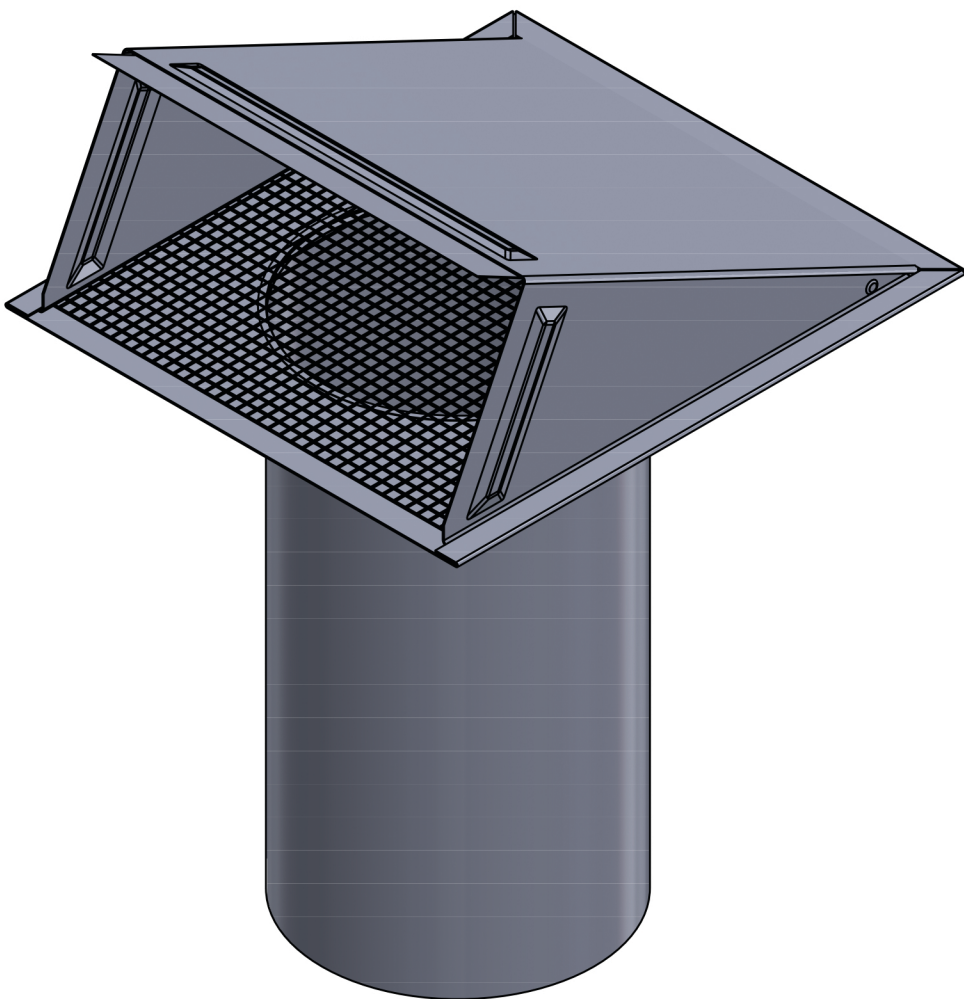
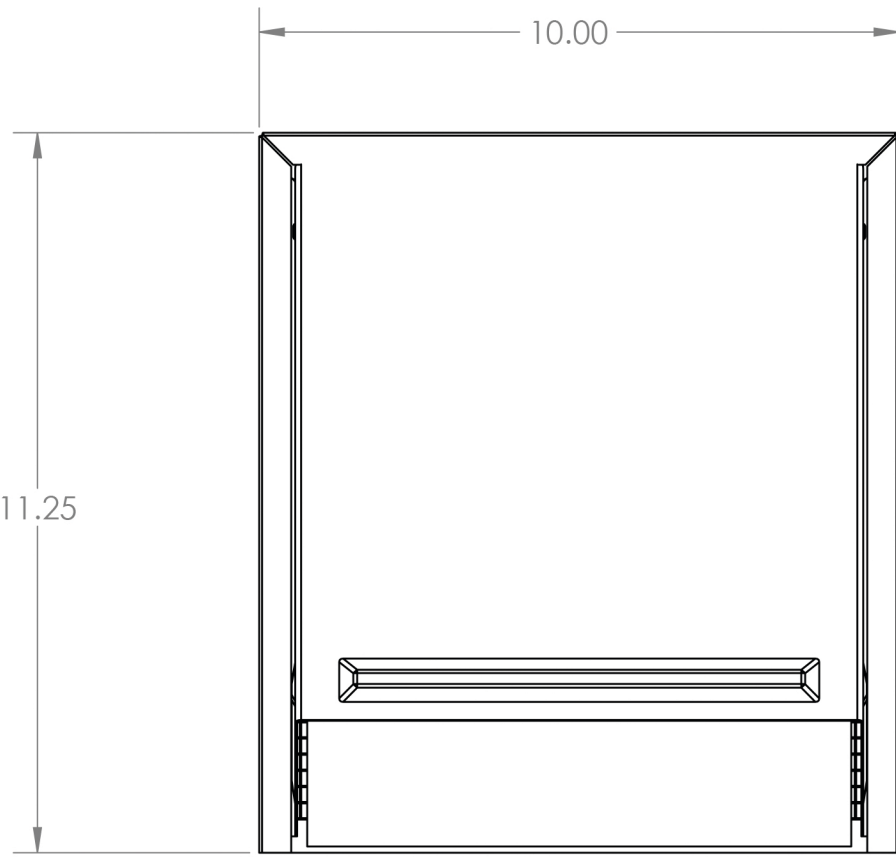
C

B

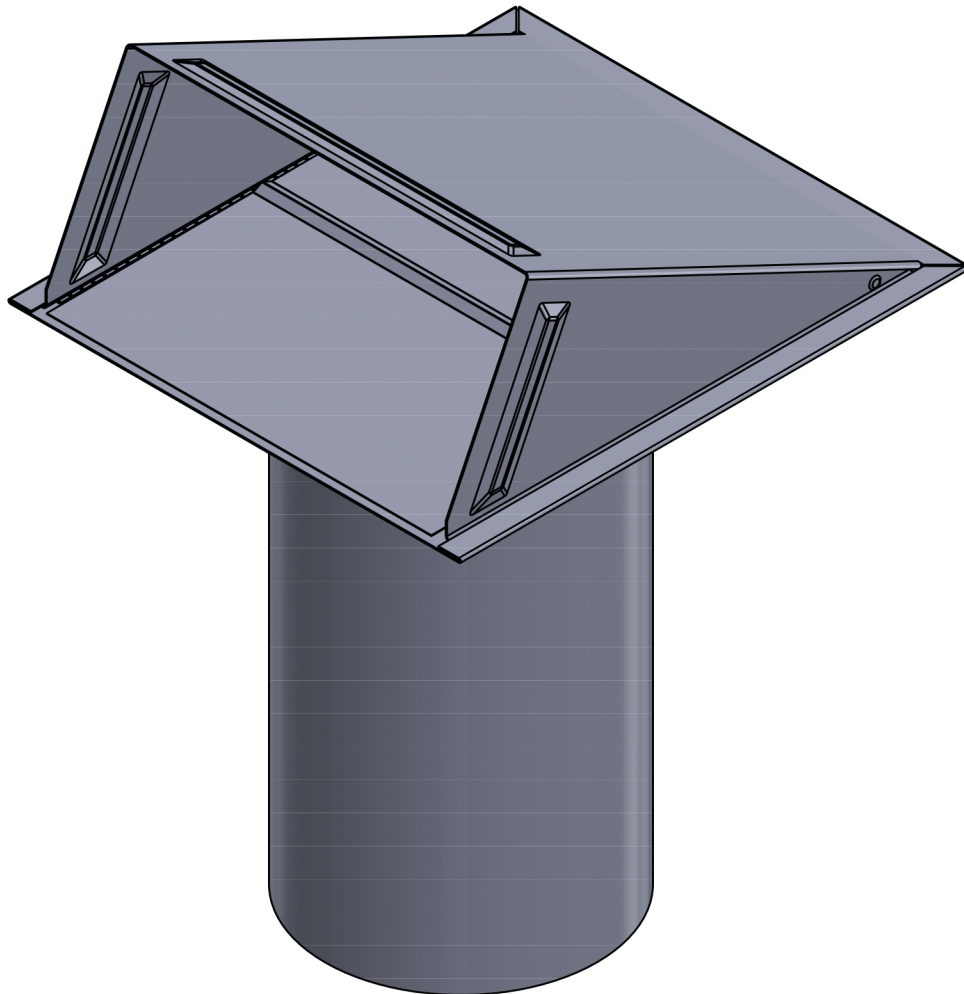
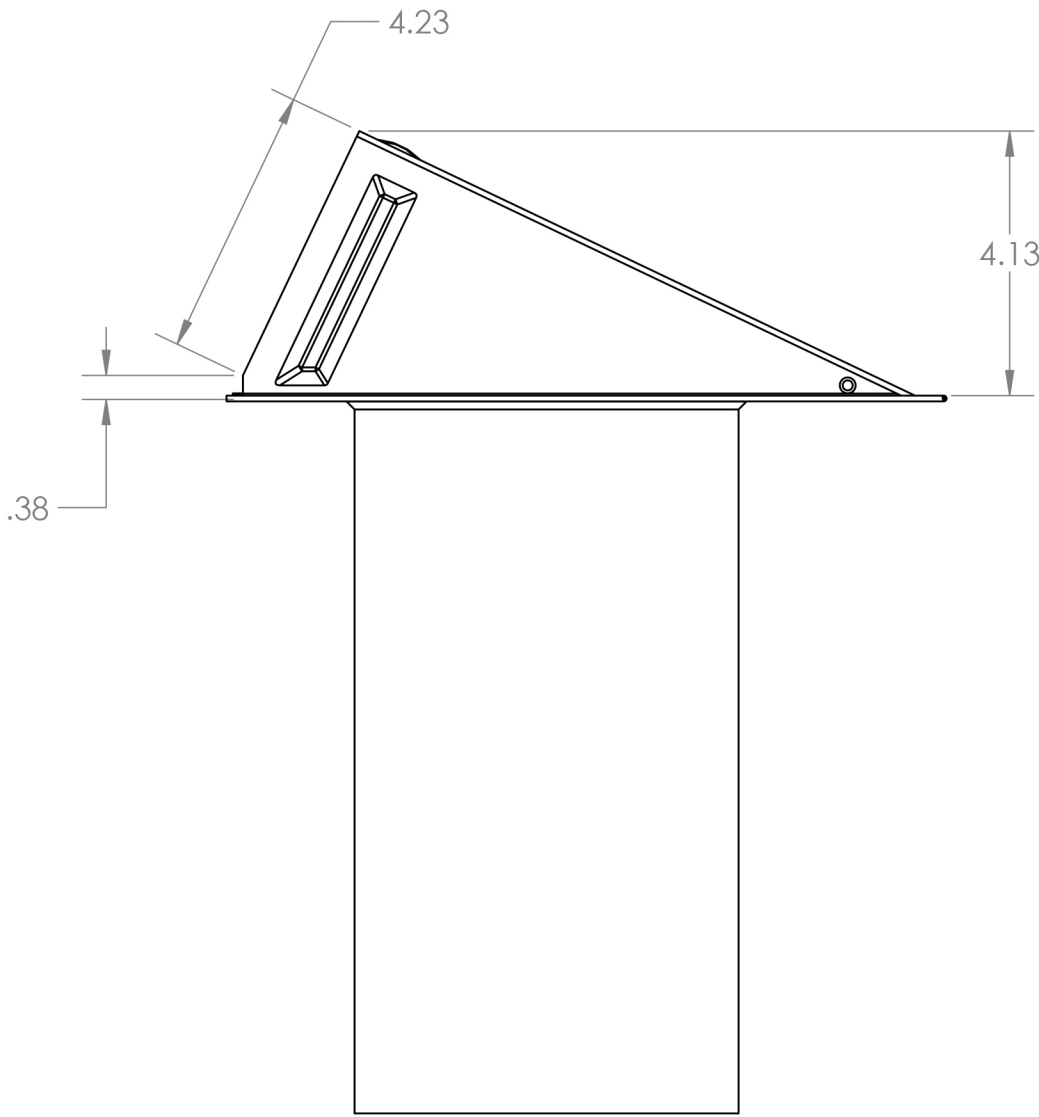
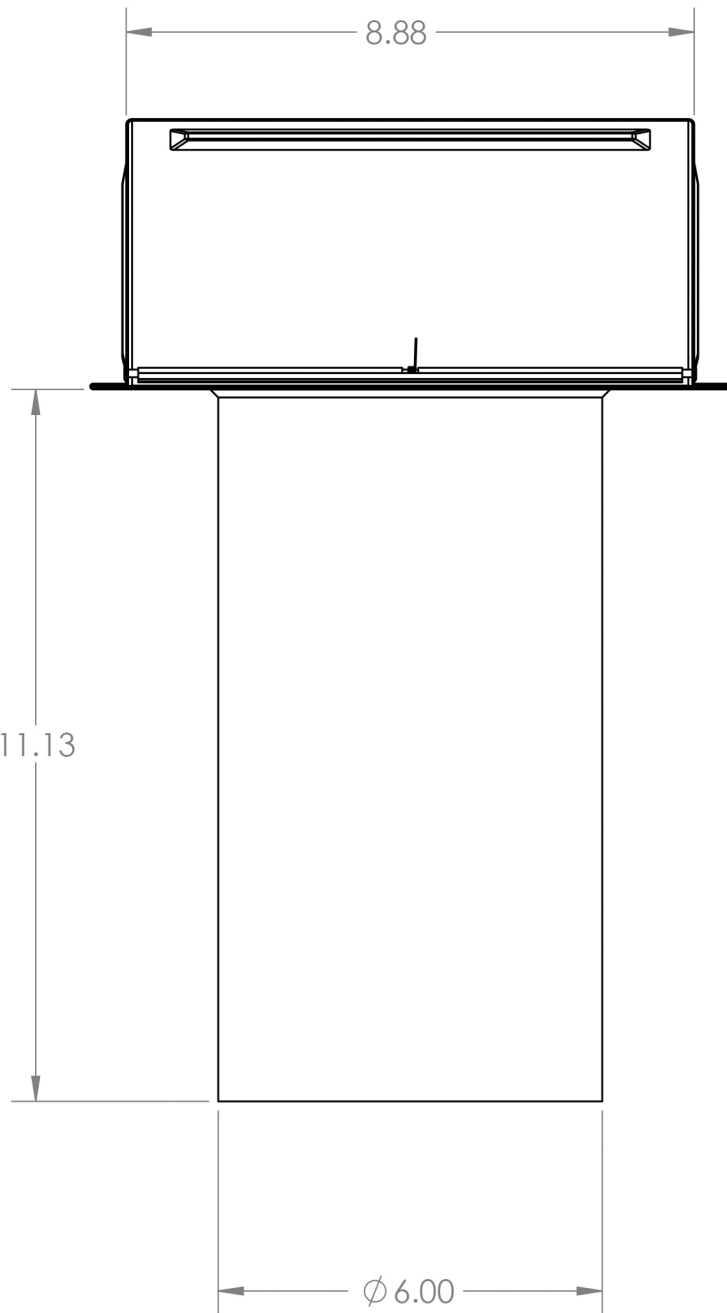
B

A

A



OPEN VENT



CLOSED

PROPRIETARY AND CONFIDENTIAL  
THE INFORMATION CONTAINED IN THIS  
DRAWING IS THE SOLE PROPERTY OF  
LAMBRO. ANY REPRODUCTION IN PART  
OR AS A WHOLE WITHOUT THE WRITTEN  
PERMISSION OF LAMBRO IS PROHIBITED.

		UNLESS OTHERWISE SPECIFIED:		NAME	DATE
		DIMENSIONS ARE IN INCHES	DRAWN		
		TOLERANCES:	CHECKED		
		FRACTIONAL: 1/16	ENG APPR.		
		ANGULAR: MACH ± 1 BEND ± .01	MFG APPR.		
		TWO PLACE DECIMAL ± 0.01			
		THREE PLACE DECIMAL ± 0.005			
		INTERPRET GEOMETRIC TOLERANCING PER:	Q.A.		
		MATERIAL	COMMENTS:		
		FINISH	Net Free Area (NFA)		
NEXT ASSY	USED ON		Mouth Opening: 40 sq. in.		
APPLICATION		DO NOT SCALE DRAWING	Opening With Screen: 15 sq. in.		
			Spring Controlled Damper		

 Lambro Industries, Inc.  
115 Albany Ave.  
Amityville, NY 11701  
(631) 842-8088  
www.lambro.net

TITLE: 6" Paint Grade Steel Wall Exhaust Hood Vent  
Spring Damper - 1/4" Wire Mesh Screen  
11" Pipe  
Cover, Base, Damper & Pipe: 26 Gauge

SIZE DWG. NO.  
**C 3460GMS-11-PG**  
SCALE: 1:3 WEIGHT: SHEET 1 OF 1