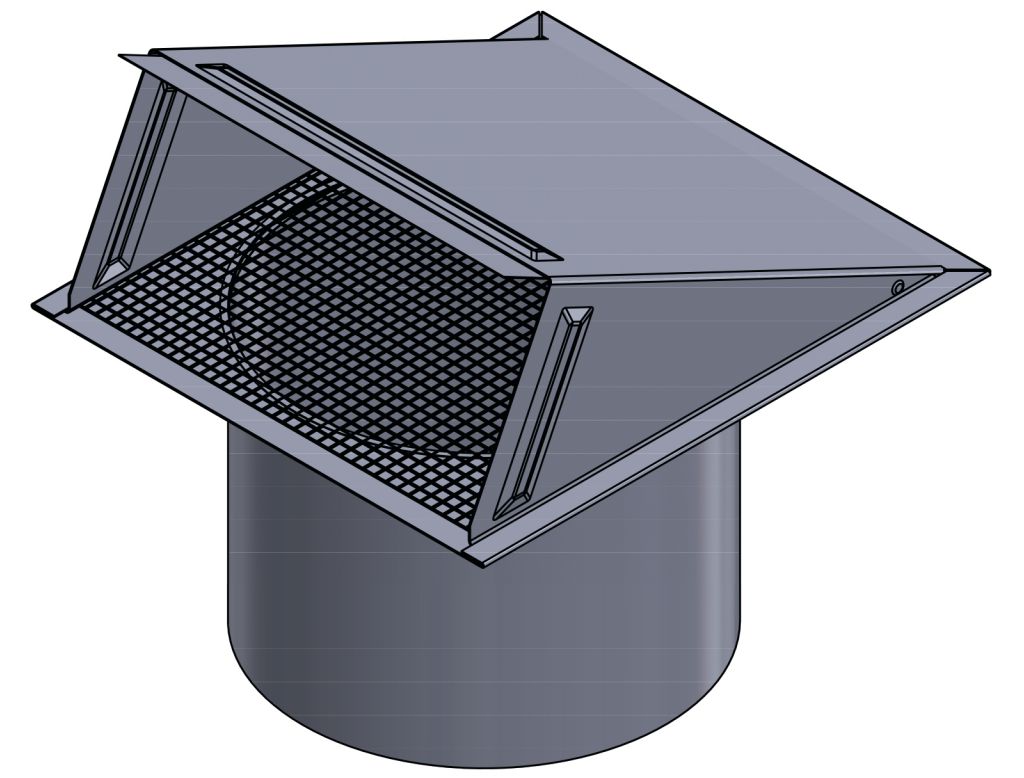
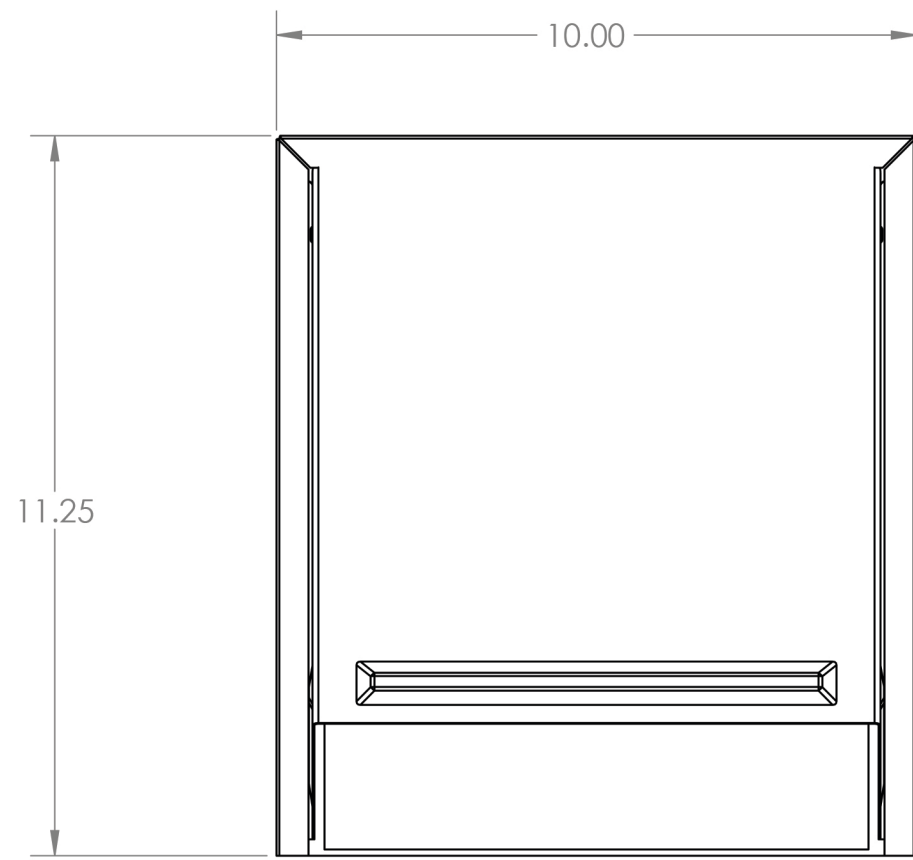


4

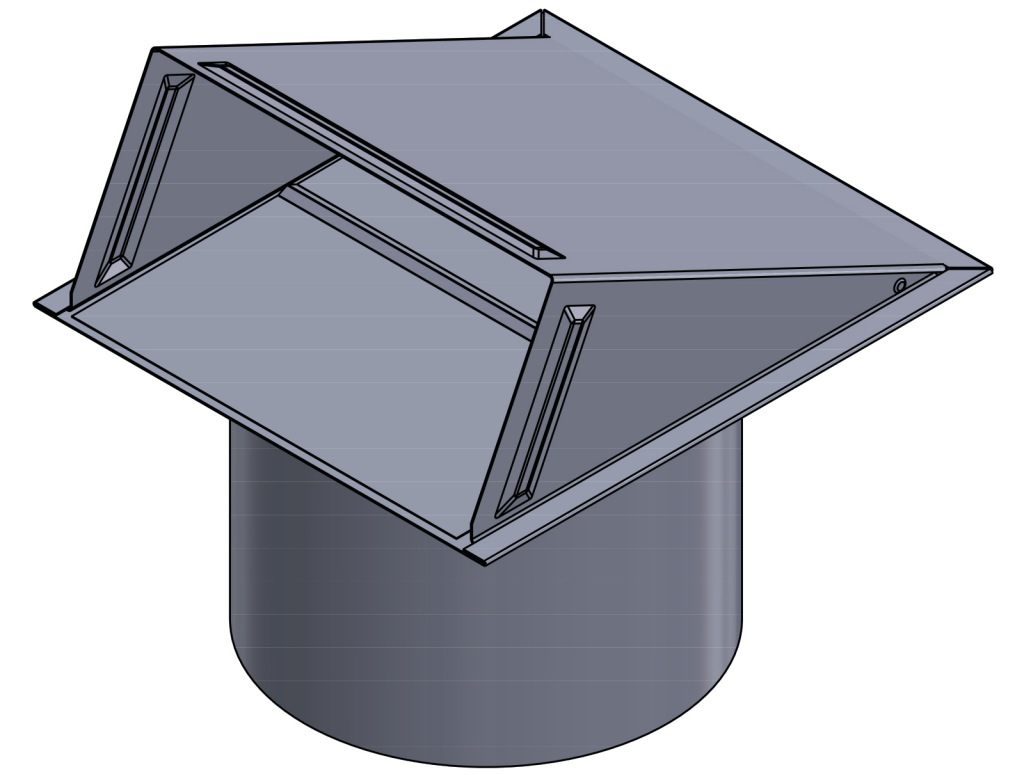
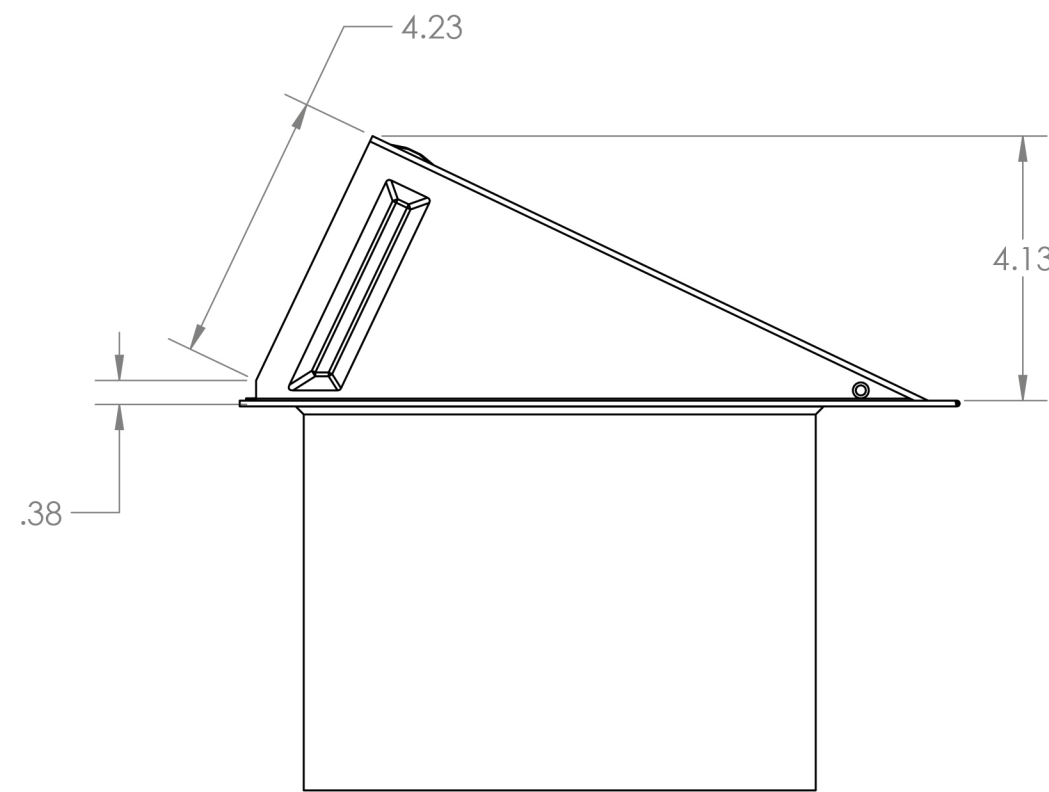
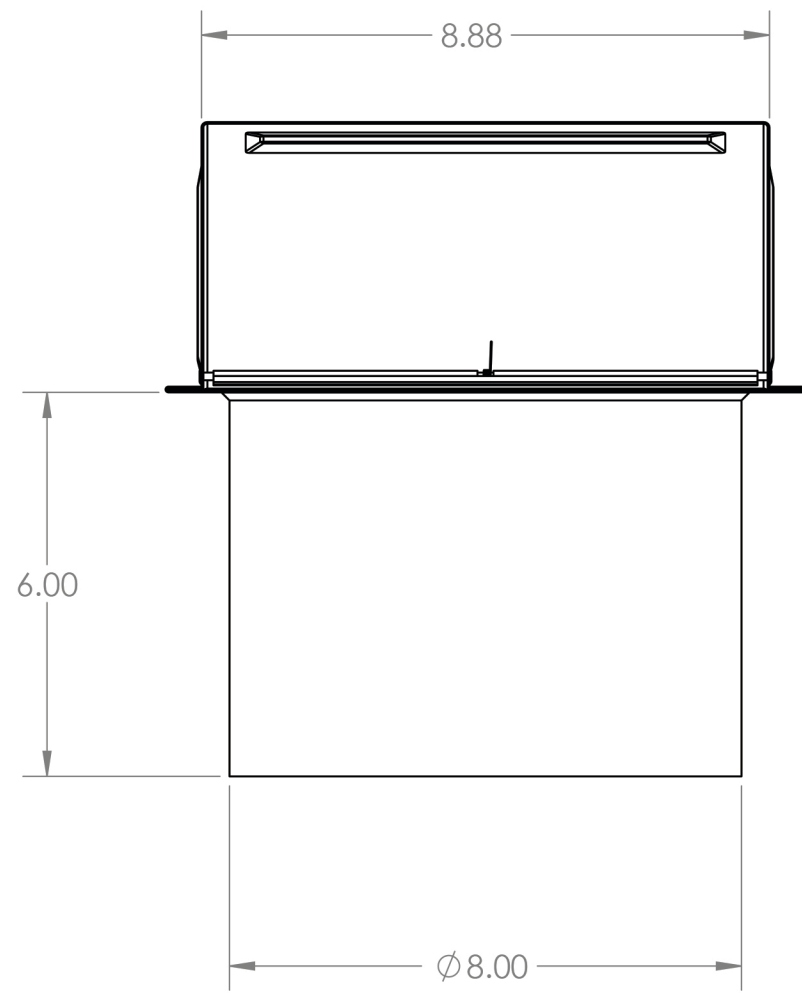
3

2

1



OPEN VENT



CLOSED VENT

**LAMBRO** Lambro Industries, Inc.  
 115 Albany Ave.  
 Amityville, NY 11701  
 (631) 842-8088  
 www.lambro.net

**PROPRIETARY AND CONFIDENTIAL**  
 THE INFORMATION CONTAINED IN THIS DRAWING IS THE SOLE PROPERTY OF LAMBRO. ANY REPRODUCTION IN PART OR AS A WHOLE WITHOUT THE WRITTEN PERMISSION OF LAMBRO IS PROHIBITED.

UNLESS OTHERWISE SPECIFIED:		NAME	DATE
DIMENSIONS ARE IN INCHES	DRAWN		
TOLERANCES:	CHECKED		
FRACTIONAL: ±1/16	ENG APPR.		
ANGULAR: MACH ± 1 BEND ± 0.1	MFG APPR.		
TWO PLACE DECIMAL ±0.01	Q.A.		
THREE PLACE DECIMAL ±0.005	COMMENTS:		
INTERPRET GEOMETRIC TOLERANCING PER:	Net Free Area (NFA)		
MATERIAL	Mouth Opening: 40 sq. in.		
FINISH	Opening With Screen: 28 sq. in.		
NEXT ASSY	USED ON		
APPLICATION	DO NOT SCALE DRAWING		

TITLE: 8" Galvanized Steel Wall Exhaust Hood Vent Spring Damper - 1/4" Wire Mesh Screen 6" Pipe		
Cover, Base & Pipe: 26 Gauge Damper: 26 Gauge (Aluminum)		
SIZE	DWG. NO.	REV
<b>C 3480GMS-6</b>		
SCALE: 1:3	WEIGHT:	SHEET 1 OF 1

4

3

2

1

D

D

C

C

B

B

A

A