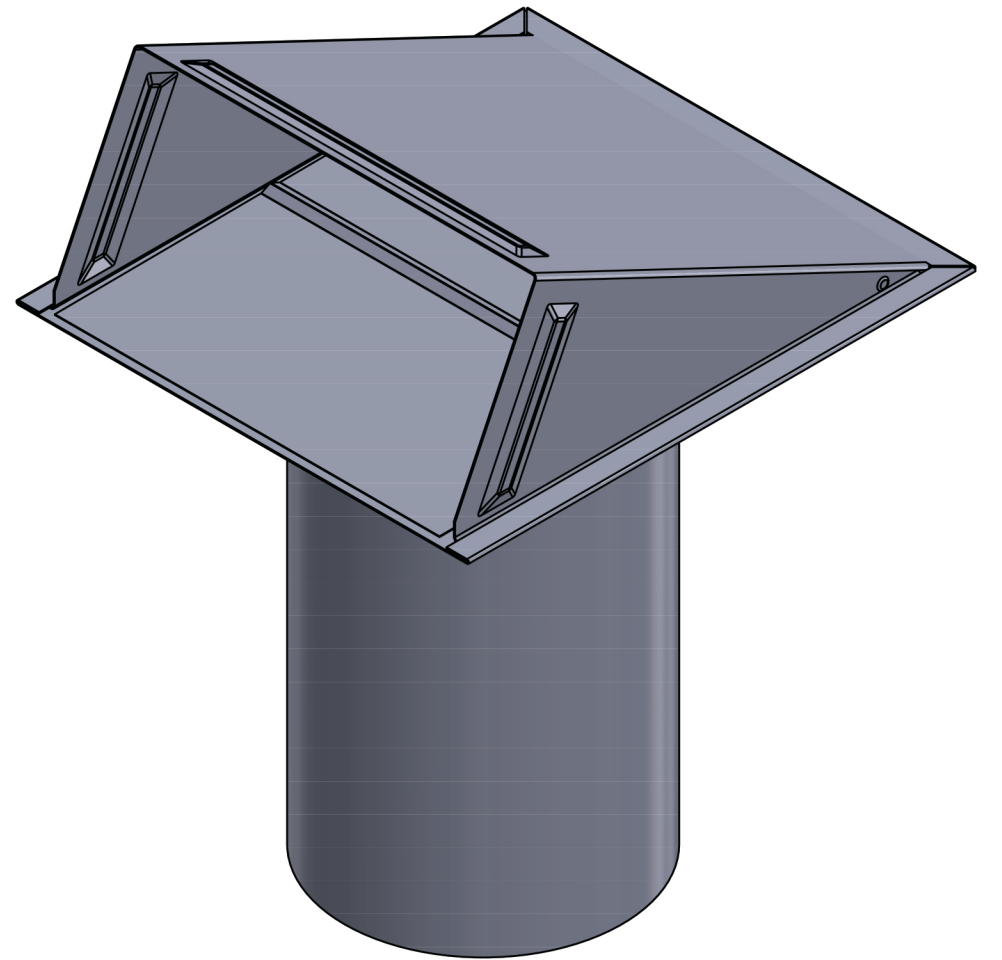


OPEN VENT



CLOSED VENT

PROPRIETARY AND CONFIDENTIAL
THE INFORMATION CONTAINED IN THIS
DRAWING IS THE SOLE PROPERTY OF
LAMBRO. ANY REPRODUCTION IN PART
OR AS A WHOLE WITHOUT THE WRITTEN
PERMISSION OF LAMBRO IS PROHIBITED.

		UNLESS OTHERWISE SPECIFIED:		
		DIMENSIONS ARE IN INCHES	DRAWN	NAME
		TOLERANCES:	CHECKED	DATE
		FRACTIONAL: 1/16	ENG APPR.	
		ANGULAR: MACH ± .1 BEND ± .01	MFG APPR.	
		TWO PLACE DECIMAL ± 0.01		
		THREE PLACE DECIMAL ± 0.005		
		INTERPRET GEOMETRIC TOLERANCING PER:	Q.A.	
		MATERIAL	COMMENTS:	
		FINISH	Net Free Area (NFA)	
NEXT ASSY	USED ON		40 sq. in.	
APPLICATION		DO NOT SCALE DRAWING	Spring controlled damper	

LAMBRO Lambro Industries, Inc.
115 Albany Ave.
Amityville, NY 11701
(631) 842-8088
www.lambro.net

TITLE: 6" Paint Grade Steel Wall Exhaust Hood Vent
Spring Damper - 11" Pipe
Cover, Base, Damper & Pipe: 26 Gauge

SIZE	DWG. NO.
C 3460G-11-PG	
SCALE: 1:3	WEIGHT:
	SHEET 1 OF 1