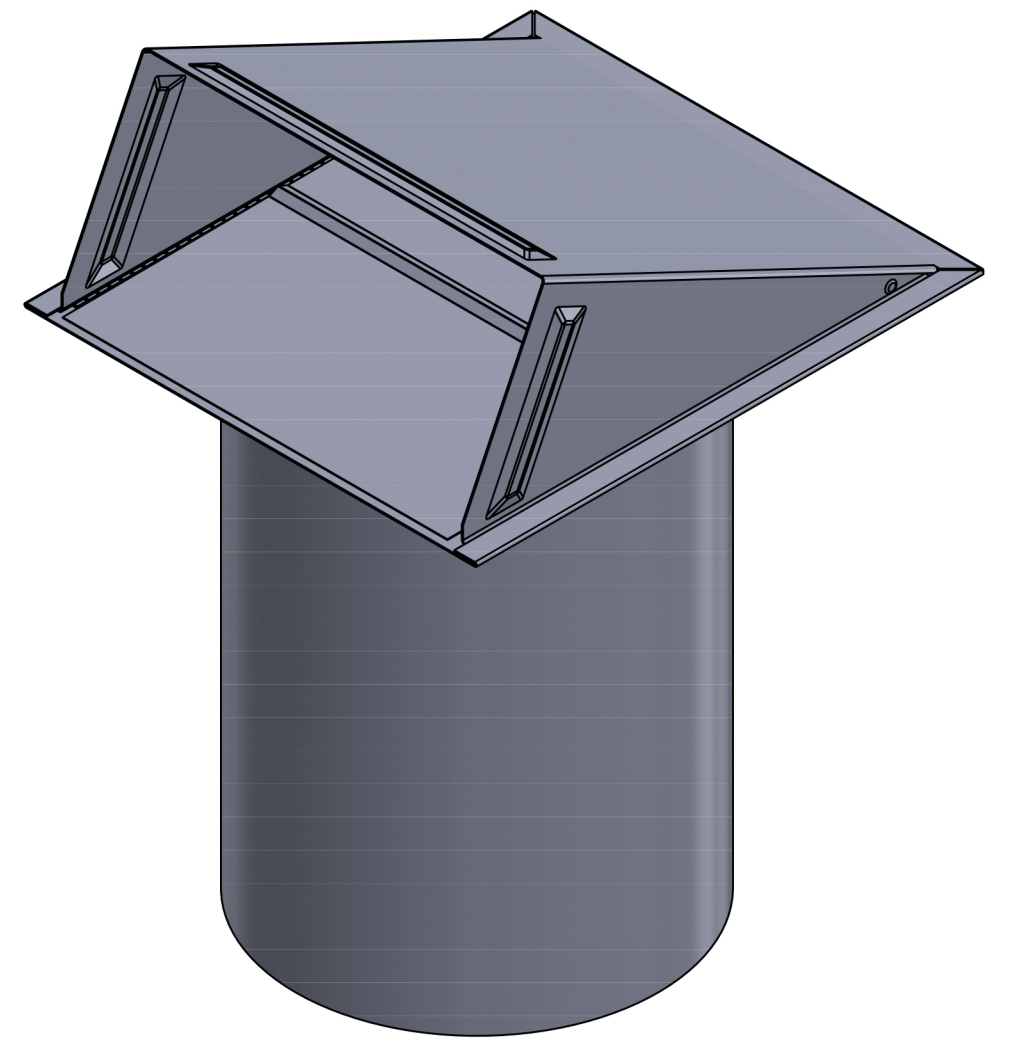


OPEN VENT



CLOSED VENT

PROPRIETARY AND CONFIDENTIAL
THE INFORMATION CONTAINED IN THIS
DRAWING IS THE SOLE PROPERTY OF
LAMBRO. ANY REPRODUCTION IN PART
OR AS A WHOLE WITHOUT THE WRITTEN
PERMISSION OF LAMBRO IS PROHIBITED.

UNLESS OTHERWISE SPECIFIED:			NAME	DATE
DIMENSIONS ARE IN INCHES TOLERANCES: FRACTIONAL: 1/16 ANGULAR: MACH ± 1 BEND ± .01 TWO PLACE DECIMAL ± 0.01 THREE PLACE DECIMAL ± 0.005		DRAWN		
		CHECKED		
		ENG APPR.		
		MFG APPR.		
INTERPRET GEOMETRIC TOLERANCING PER:		Q.A.		
MATERIAL		COMMENTS:		
FINISH		Net Free Area (NFA)		
APPLICATION		Mouth Opening: 40 sq. in.		
		Opening With Screen: 27 sq. in.		
		Spring controlled damper		

Lambro Industries, Inc.
115 Albany Ave.
Amityville, NY 11701
(631) 842-8088
www.lambro.net

TITLE: 8" Paint Grade Steel Wall Exhaust Hood Vent
Spring Damper - 1/4" Wire Mesh Screen
11" Pipe
Cover, Base, Damper & Pipe: 26 Gauge

SIZE DWG. NO.
C 3480G-11-PG
SCALE: 1:3 WEIGHT: SHEET 1 OF 1