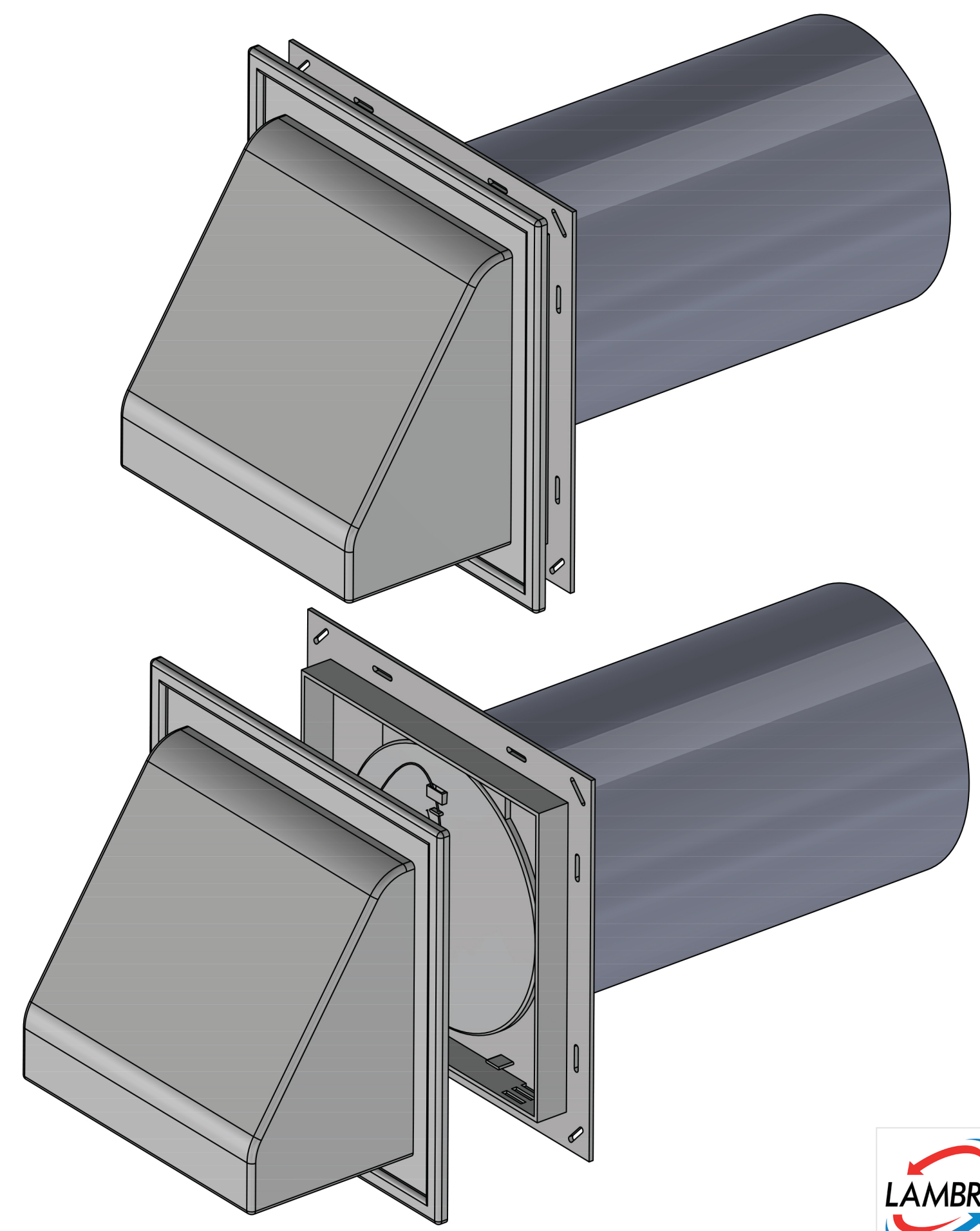
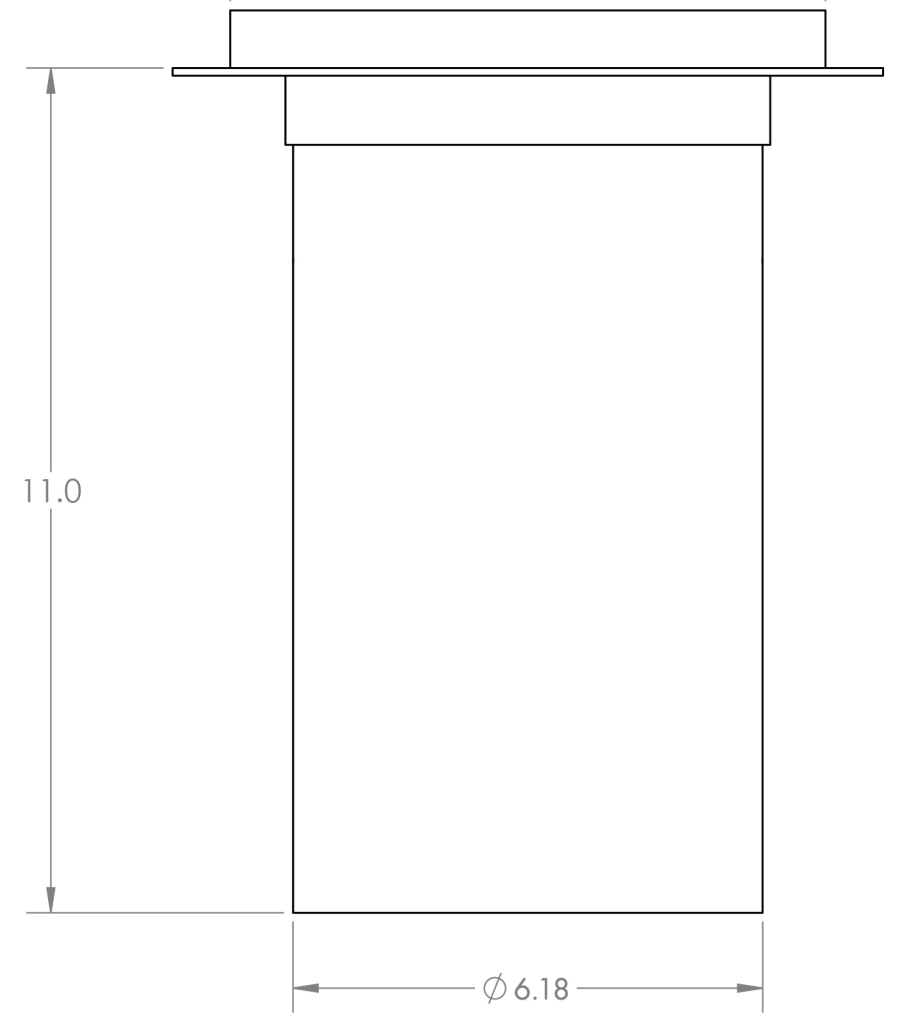
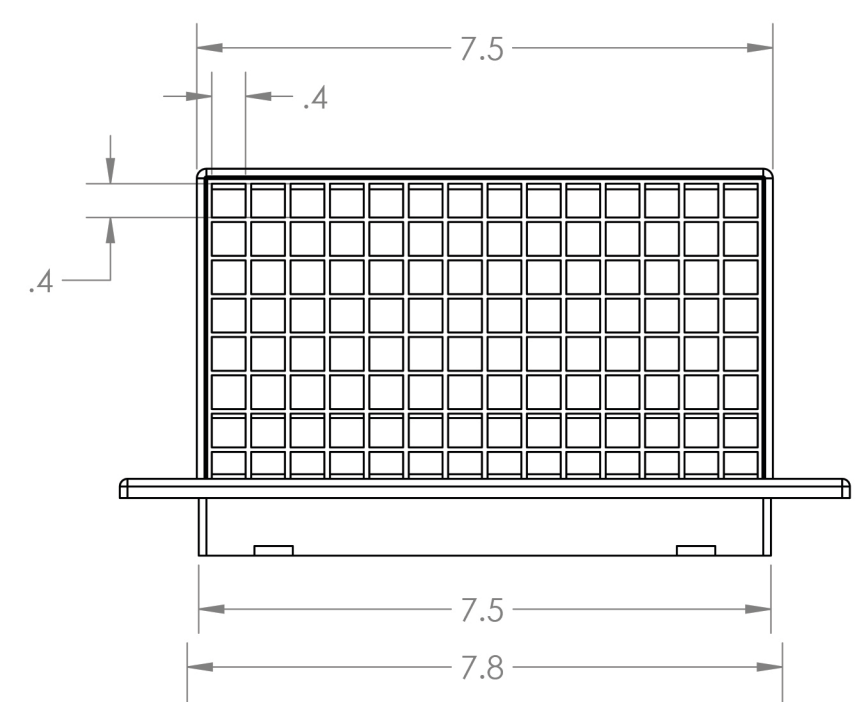
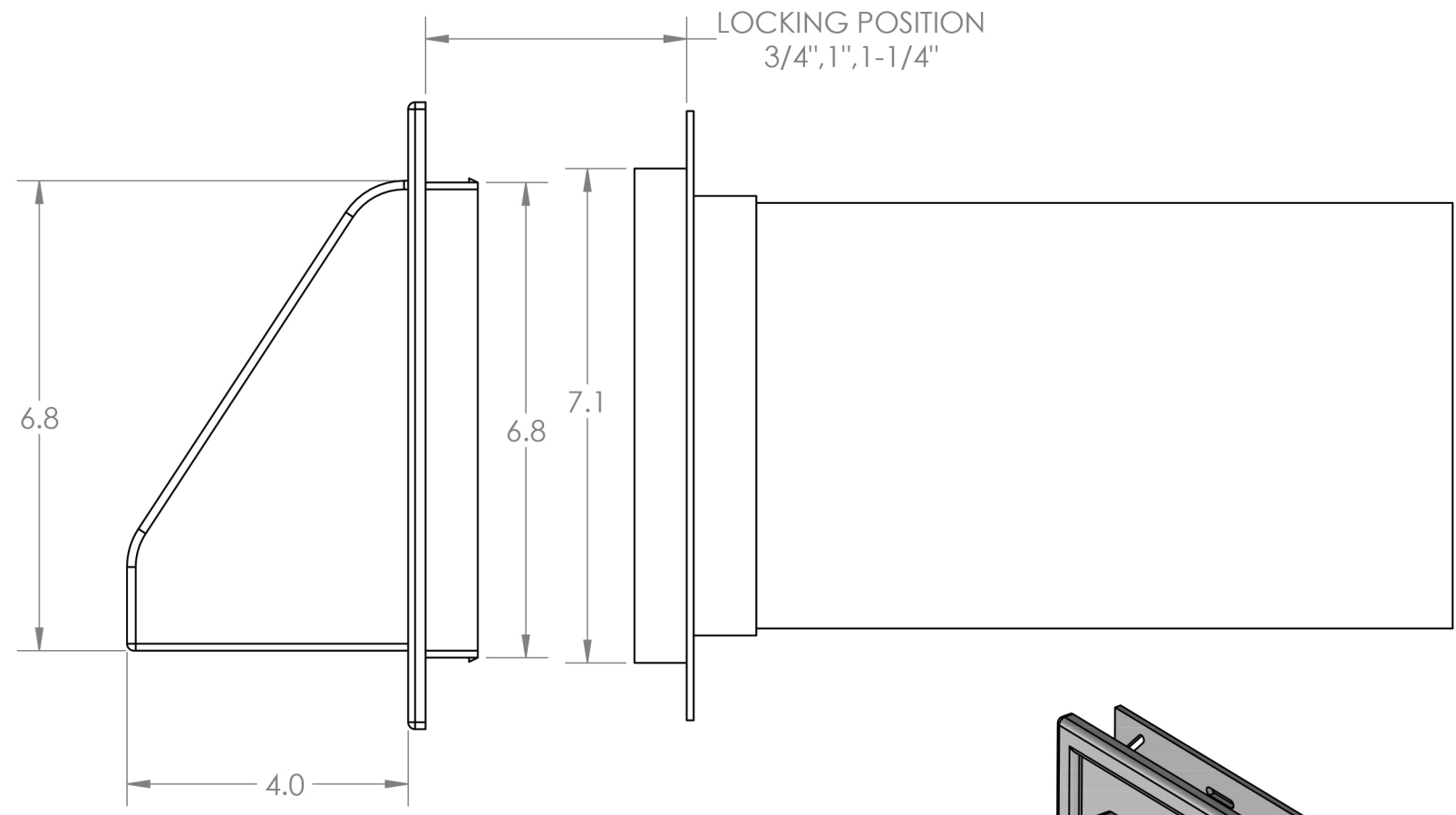
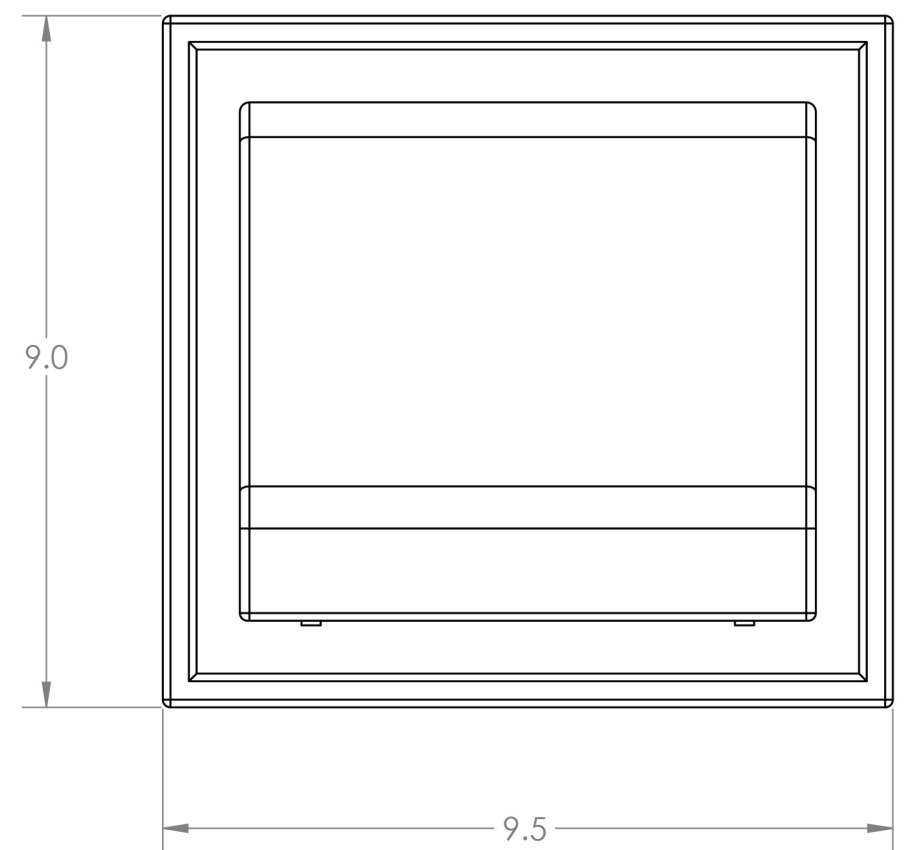


4

3

2

1



D

D

C

C

B

B

A

A



PROPRIETARY AND CONFIDENTIAL
 THE INFORMATION CONTAINED IN THIS DRAWING IS THE SOLE PROPERTY OF LAMBRO. ANY REPRODUCTION IN PART OR AS A WHOLE WITHOUT THE WRITTEN PERMISSION OF LAMBRO IS PROHIBITED.

UNLESS OTHERWISE SPECIFIED:		DRAWN		NAME		DATE	
DIMENSIONS ARE IN INCHES		CHECKED					
TOLERANCES:		ENG APPR.					
FRACTIONAL: 1/16		MFG APPR.					
ANGULAR: MACH ± 1 BEND ± .01		Q.A.					
TWO PLACE DECIMAL ± 0.01		COMMENTS:					
THREE PLACE DECIMAL ± 0.005		Net Free Area (NFA)					
INTERPRET GEOMETRIC TOLERANCING PER:		Without Screen: 29 sq. in.					
MATERIAL		With Screen: 18 sq. in.					
FINISH		NOTE: Includes optional 1/4" wire mesh screen for base hole					
APPLICATION		DO NOT SCALE DRAWING					

LAMBRO Lambro Industries, Inc.
 115 Albany Ave.
 Amityville, NY 11701
 (631) 842-8088
 www.lambro.net

TITLE: 6" Plastic Wall Exhaust Hood Vent
 J-Channel - Spring Damper
 Removable Screen - 11" Pipe
 Made of polymer resin material with UV inhibitor used to help prevent the premature fading of vent

SIZE DWG. NO. REV
C 3510WTP-JC

SCALE: 1:2.5 WEIGHT: SHEET 1 OF 1

4

3

2

1